

18 September 2025

## Your Zurich Schools Insurance

**Our Reference** 104484906  
**Policy Number** KSC-242101-4623

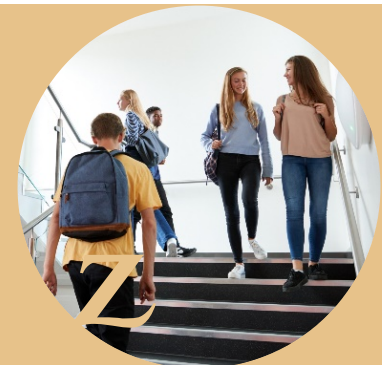
To Whom It May Concern

We can confirm that Leicestershire County Council and/or Manor High School is currently covered by our Company until the policy expires on 31 August 2026. The Insurance includes the following essential features:

Limit of Indemnity		
Public Liability	£25,000,000	any one event
Pollution/Products Liability	£25,000,000	for all claims in the aggregate during any one period of insurance
Employers' Liability	£25,000,000	any one event inclusive of costs
Excess		
Public Liability	Nil	any one claim
Pollution/Products Liability	Nil	any one claim
Employers' Liability	Nil	any one claim
Indemnity to Principals		
Covers include a standard Indemnity to Principals Clause in respect of contractual obligations.		
Full Cover		
The policy documents should be referred to for details of full cover.		

Yours faithfully


On behalf of Zurich Insurance Company Ltd



### Contact Details

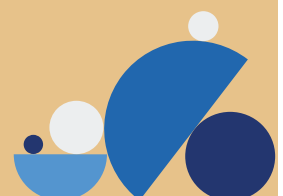
 **Call us on**  
**0800 917 9445**

We may record or monitor calls to improve our service.

 **Email us at**  
[schools.team@uk.zurich.com](mailto:schools.team@uk.zurich.com)

 **Visit us at**  
[www.zurich.co.uk/municipal](http://www.zurich.co.uk/municipal)

 **Write to us at**  
 Customer Administration  
 Zurich Insurance  
 Drayton Lane  
 Chichester  
 PO20 2EW



Zurich Municipal is a trading name of Zurich Insurance Company Ltd. A public limited company incorporated in Switzerland. Registered in the Canton of Zurich, No. CHE-105.833.114, registered offices at Mythenquai 2, 8002 Zurich. UK Branch registered in England and Wales no BR000105. UK Branch Head Office: The Zurich Centre, 3000 Parkway, Whiteley, Fareham, Hampshire PO15 7JZ. Zurich Insurance Company Ltd is authorised and regulated in Switzerland by the Swiss Financial Market Supervisory Authority FINMA. Authorised by the Prudential Regulation Authority. Subject to regulation by the Financial Conduct Authority and limited regulation by the Prudential Regulation Authority. Details about the extent of our regulation by the Prudential Regulation Authority are available from us on request. Our firm reference number is 959113.

MCHBAA01 (05/25)